



## Improving Monitoring for Better Integrated Climate and Biodiversity Approaches, Using Environmental and Earth Observations



Tomáš Mildorf

Západočeská univerzita v Plzni, Katedra geomatiky



Funded by  
the European Union



# Factsheet

Call: HORIZON-CL6-2024-CLIMATE-01

Topic: EU-China international cooperation on improving monitoring for better integrated climate and biodiversity approaches, using environmental and Earth observation

Type of Action: HORIZON-RIA

Acronym: BioClima

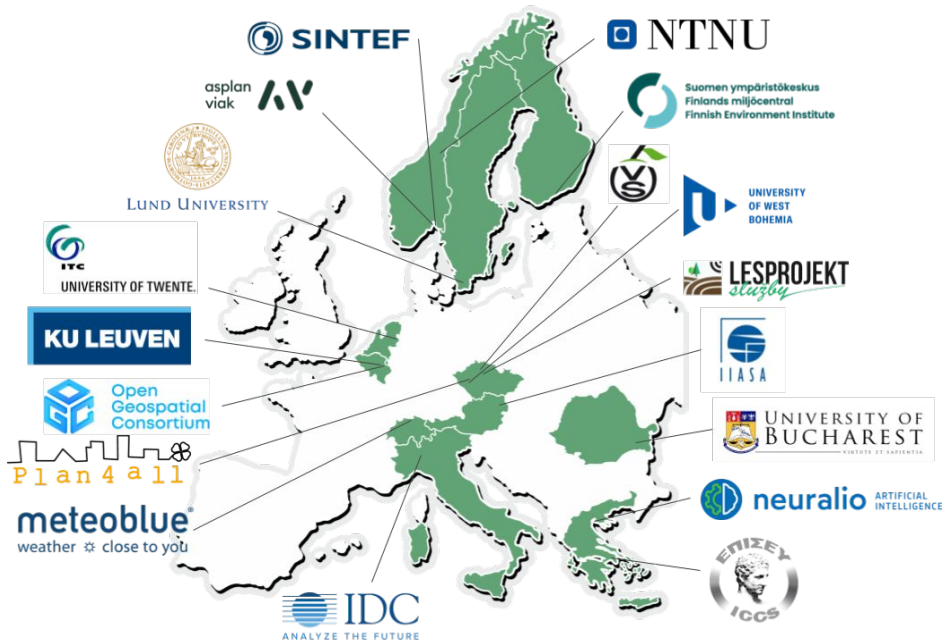
GA Number: 101181408

Duration: 48 months

Start Date: 01 Jan 2025

Project Cost: €4,999,437.50

# Partneři



No.	Participant organisation name	Short	Country
1	UNIVERSITY OF WEST BOHEMIA ( <i>Coordinator</i> )	UWB	Czechia
2	SINTEF AS	SINTEF	Norway
3	PLAN4ALL ZS	P4A	Czechia
4	INSTITUTE OF COMMUNICATION AND COMPUTER SYSTEMS	ICCS	Greece
5	KATHOLIEKE UNIVERSITEIT LEUVEN	KU Leuven	Belgium
6	ASPLAN VIAK AS	Asplan	Norway
7	VYZKUMNY A SLECHTITELSKY USTAV OVOCNARSKY HOLOVOUSY SRO	VSUO	Czechia
8	LUNDS UNIVERSITET	LU	Sweden
9	UNIVERSITATEA DIN BUCURESTI	UB	Romania
10	NEURALIO AI IKE	NEURALIO	Greece
11	NORGES TEKNISK-NATURVITENSKAPELIGE UNIVERSITET NTNU	NTNU	Norway
12	METEOBLUE AG ( <i>Associated partner</i> )	MBAG	Switzerland
13	IDC ITALIA SRL IT	IDC	Italy
14	UNIVERSITEIT TWENTE	UT	Netherlands
15	SUOMEN YMPARISTOKESKUS	SYKE	Finland
16	OPEN GEOSPATIAL CONSORTIUM EUROPE	OGC	Belgium
17	INTERNATIONALES INSTITUT FUER ANGEWANDTE SYSTEMANALYSE	IIASA	Austria
18	Aerospace Information Research Institute, Chinese Academy of Sciences	AIR-CAS	China
19	INSTITUTE OF ZOOLOGY, CHINESE ACADEMY OF SCIENCE	IOZ-CAS	China
20	Institute of Semiconductors	IOS-CAS	China
21	Nanjing Institute of Environmental Sciences, Ministry of Environmental Protection	NIES-MEE	China
22	Fujian Space Carbon Technology Co.,Ltd.	KTT	China
23	INSTITUTE OF GEOGRAPHICAL SCIENCES AND NATURAL RESOURCES RESEARCH, CHINESE ACADEMY OF SCIENCES	IGSNRR-CAS	China
24	LANZHOU JIAOTONG UNIVERSITY	LZJITU	China
25	Qingdao University of Technology	QUT	China
26	Hangzhou City University	HZCU	China
27	EllipSpace (Beijing) Technology Co., Ltd.	ELLIPSPACE	China
28	Wuyi University	WYU	China
29	China University of Mining and Technology	CUMT	China
30	Zhejiang University	ZJU	China
31	Institute of Agricultural Resources and Regional Planning CAAS	IARRP-CAAS	China
32	Ecology and Nature Conservation Institute, Chinese Academy of Forestry	ENCI-CAF	China
33	BEIJING NORMAL UNIVERSITY	BNU	China
34	Institute of Subtropical Agriculture, Chinese Academy of Sciences	ISA-CAS	China
35	Foreign Economic Cooperation Office (FECO), Ministry of Envir. Protection of China	FECO/MEE	China
36	Environmental Development Center of the Ministry of Ecology and Environment	EDC/MEE	China
37	Institutes of Science and Development, Chinese Academy of Sciences	CASISD	China

# Případové studie - Čína a Evropa

中国生物多样性保护优先区域分布图

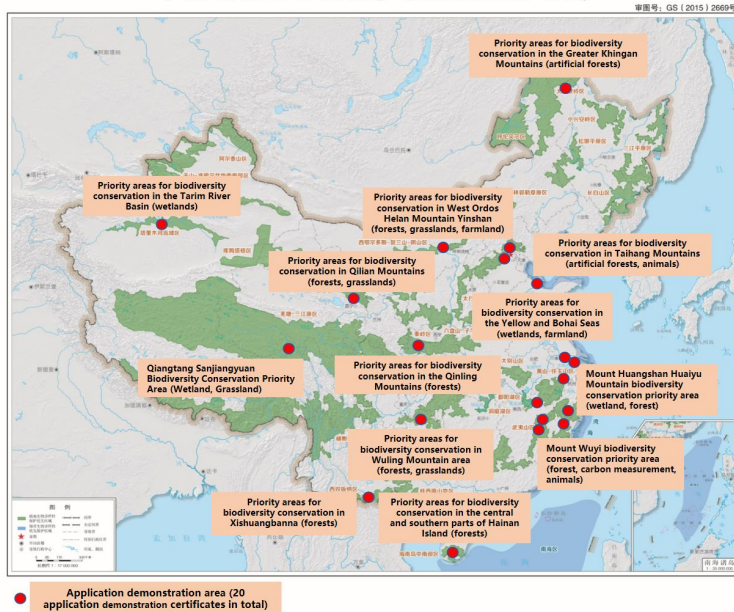


Figure 3. Case study location in relation to biogeographical regions